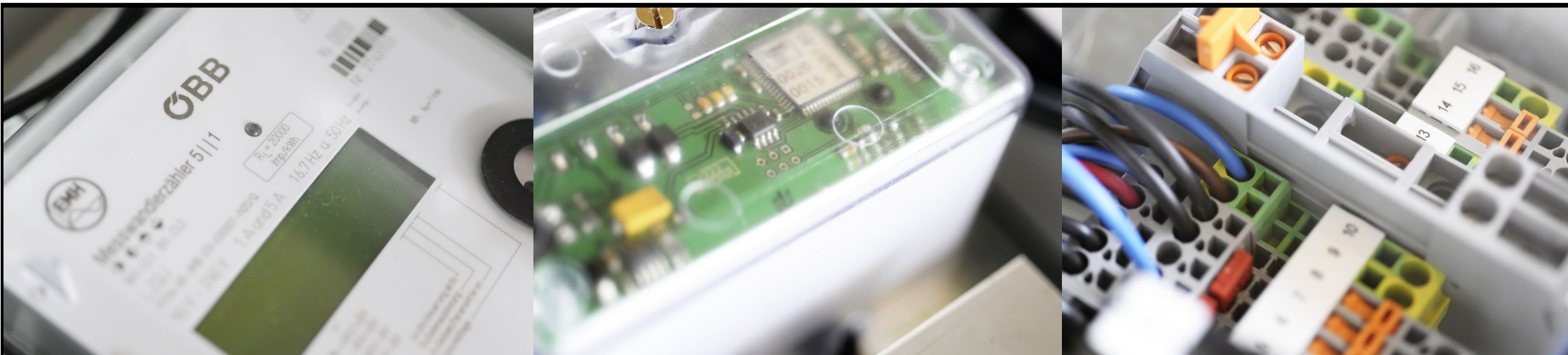


# RailwayBox

The energy metering system for future railways



# RailwayBox

- **Main components**
  - antenna (GPS/GPRS)
  - intelligent modem
  - EMH- (AC) or LEM-meter (AC/DC)
  - DC/DC-transducer, GPS Receiver
- **Supply with 110 V or 24 V**
  - on board supply power
- **Dimension: 500 x 400 x 150 mm**

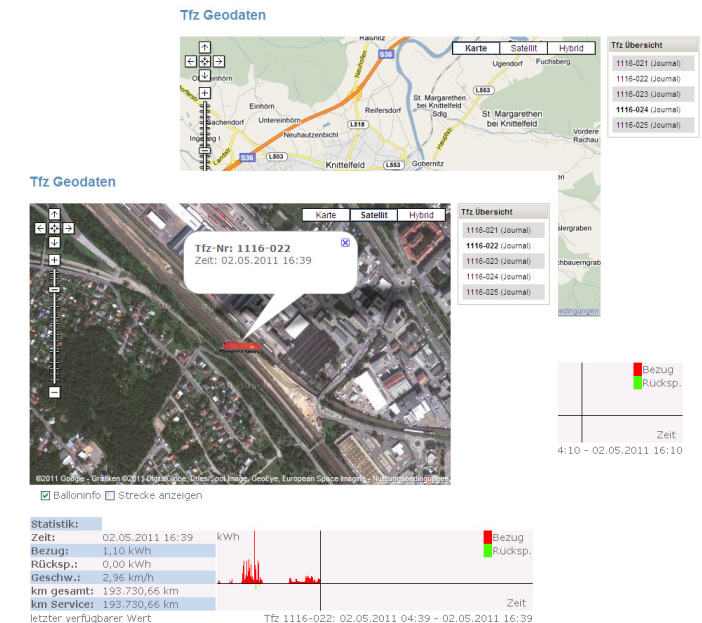


# Functionality RailwayBox

- **Meter (LEM, EMH)**
  - 1-minute values for active (kWh+, kWh-) and reactive energy consumption (kvarh+, kvarh-)
- **Antenna (GPS)**
  - 1-minute values location data (latitude, longitude, speed, frequency<sup>LEM-meter</sup>)
- **Skalar (intelligent modem)**
  - combination of consumption- and location values (time synchronal)
- **Antenna (GPRS)**
  - transmission of data via antenna (GPRS) to a server of the ÖBB-Infrastruktur AG in Austria

# Preparation of data

- **Internet application KundenFrontEND (KFE) for better and faster information for our customers**
  - load profile of the consumption (1-minute)
  - download in different data formats
  - location data via Google-Earth (live)
  - different languages and time zones
  - <http://kfe.oebb.at/kfe>



## Level of equipment

- **Forecast 31.12.2011**
  - domestic rail transport = 30-40
  - international rail transport = 100
- **Forecast 2012 and 2013**
  - nationwide equipment for ÖBB fleet (locomotives and railcars)
  - international projects



# Customers and Partners



# Contact

You want to know more?

**Harald Jony**

ÖBB-Infrastruktur AG

Energy – Sales Department

+43 1 93000 – 32141

[harald.jony@oebb.at](mailto:harald.jony@oebb.at)



Harald Jony (Head of Sales), Mag. Mathias Mayer (traction power sales), Ing. Mag. (FH) Michael Bares (traction power sales)

